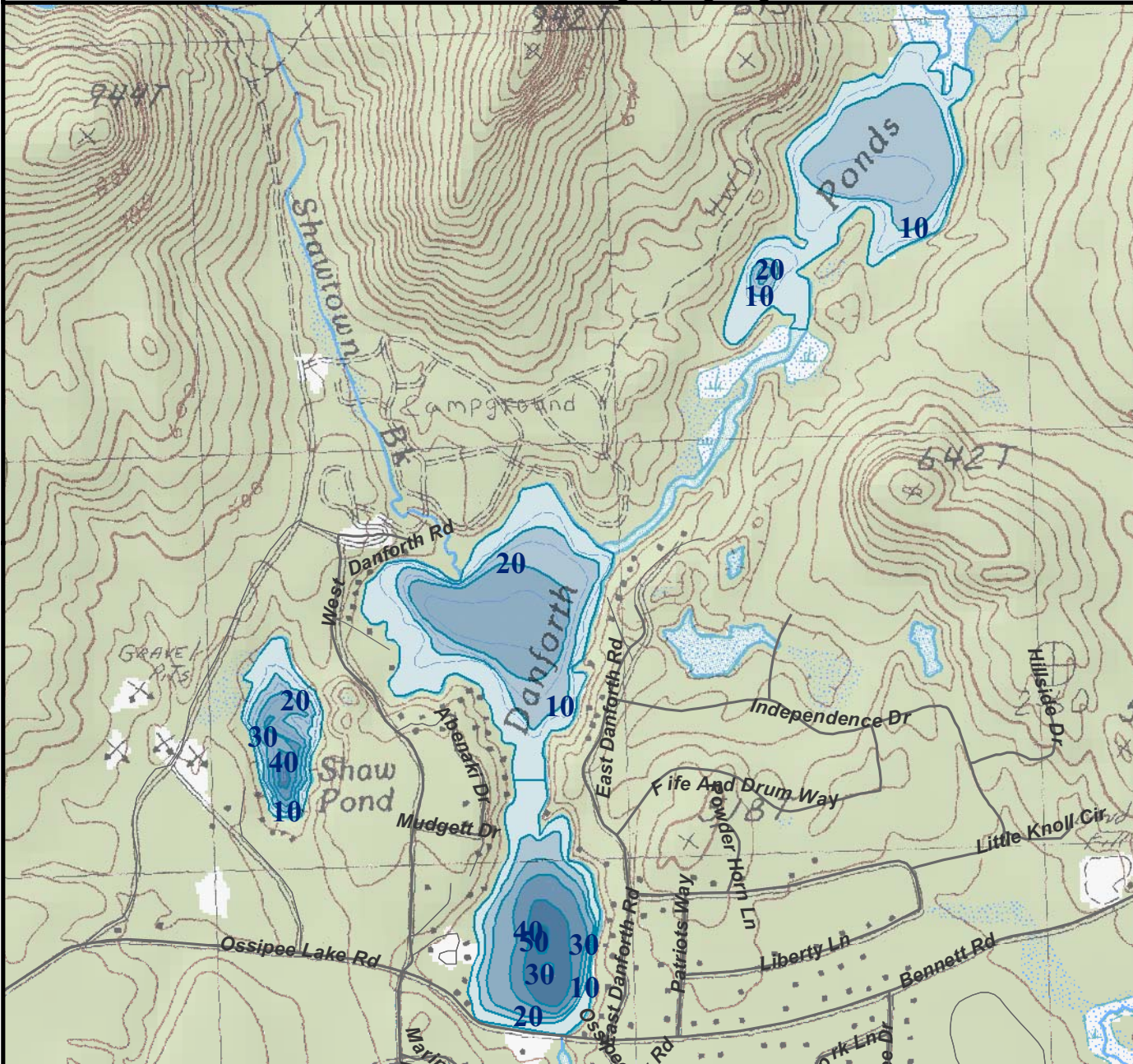


For regulation information, please refer to the NHFGD Freshwater Fishing Digest.

Contact: NHFGD Region 2 (Lakes Region), New Hampton  
E-mail: [reg2@nhfgd.org](mailto:reg2@nhfgd.org) Phone: 603-744-5470

# DANFORTH PONDS Freedom



<b>FISHERY: Warmwater</b>			
<b>TROPIC LEVEL: MESO</b>			
<b>DEPTH</b>	<b>AVG</b>	<b>MAX</b>	<b>ACRES</b>
Upper Danforth	9 Ft	21 Ft	40
Middle Danforth	15 Ft	32 Ft	51
Lower Danforth	23 Ft	55 Ft	32
<b>SPECIES: SMB,LMB,ECP,BBH,YP,SF</b>			
<b>ADDITIONAL INFO: channel connects</b>			
<b>ACCESS: No public access canoe/cartop limited via Broad Bay</b>			

Contact NH Dept of Safety, Marine Patrol Bureau for information regarding waterbody restrictions (603) 293-0991

● Water Access site (State, Federal, or Road-to-Public-Water)

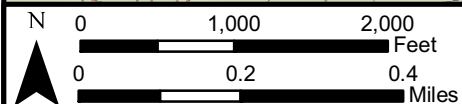
~ Bathymetric contour

Bathymetry (depth in feet)

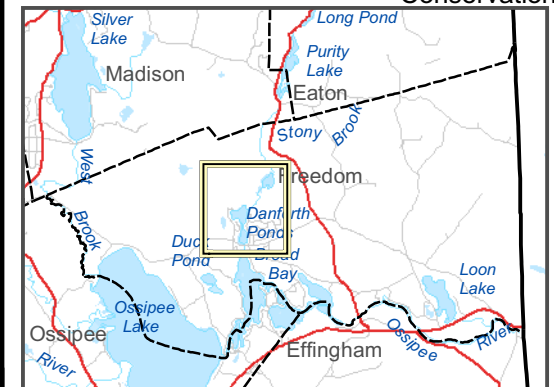
Less than 10	30 to 40
10 to 20	40 to 50
20 to 30	Greater than 50

Bathymetry data provided by the NH Department of Environmental Services, Watershed Mgt Bureau

- Town boundary
- Primary Route
- Road or Street
- - - Trail or other
- ~ Stream or Shoreline
- Surface Water
- Wetland
- Conservation Land
- Cleared
- Forest
- Contour
- Building
- Source: USGS
- Restricted Access
- Conservation



Most data presented on this map represent stock data obtained from NH GRANIT, Complex Systems Research Center, UNH. CSRC, NHOEP, NHFGD and the cooperating agencies make no claim as to the validity or reliability or to any implied uses of these data. NOT FOR NAVIGATION.



Directions: Bennett Rd from Rte 153;  
or Rte 41 W Ossipee to Ossipee Lake Rd